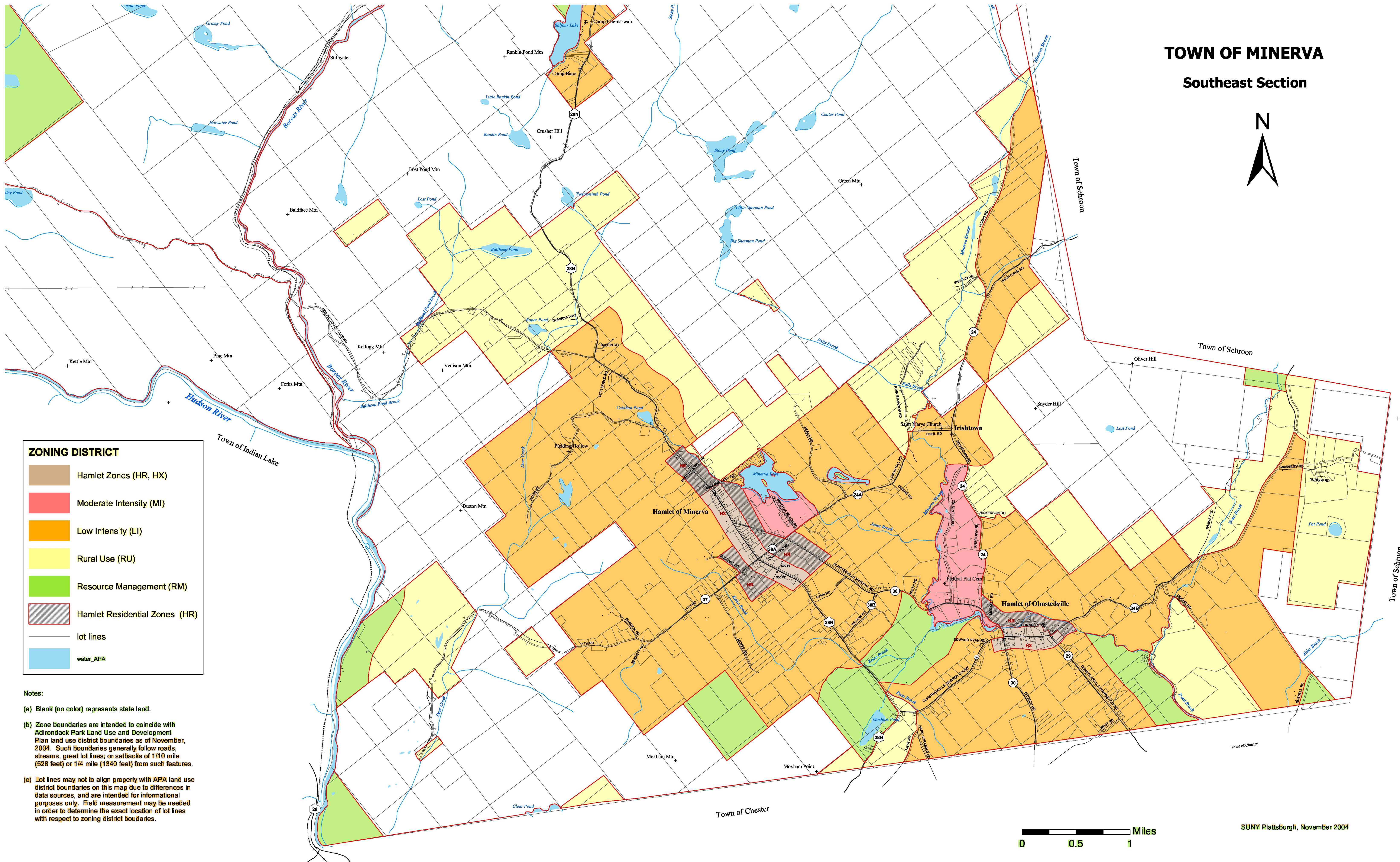










TOWN OF MINERVA ZONING MAP

TOWN OF MINERVA Southeast Section



ZONING DISTRICT	
	Hamlet Zones (HR, HX)
	Moderate Intensity (MI)
	Low Intensity (LI)
	Rural Use (RU)
	Resource Management (RM)
	Hamlet Residential Zones (HR)
	lot lines
	water_APA

- Notes:
- (a) Blank (no color) represents state land.
 - (b) Zone boundaries are intended to coincide with Adirondack Park Land Use and Development Plan land use district boundaries as of November, 2004. Such boundaries generally follow roads, streams, great lot lines; or setbacks of 1/10 mile (528 feet) or 1/4 mile (1340 feet) from such features.
 - (c) Lot lines may not align properly with APA land use district boundaries on this map due to differences in data sources, and are intended for informational purposes only. Field measurement may be needed in order to determine the exact location of lot lines with respect to zoning district boundaries.

